

VIONIC®

WITH
ORTHAHEEL®
TECHNOLOGY

Aligning
Science & Style

MEDICAL AUTUMN/WINTER 2015



POWERED BY
VASYLI
MEDICAL



Science & Style



FIRST OF ITS KIND to bring trusted orthotic technology and premium style into one transformative solution. Born from the innovative practice of renowned podiatrist Phillip Vasyli, this orthotic design known as FMT Technology is based on more than 30 years of medical success and raving customer satisfaction.

Our mission is to transform wardrobes and empower active lifestyles, matching the way people want to look to the way they long to feel. Our shoes provide pain-relief seekers with the ultimate bonus: a stylish shoe that feels great too.



UNPARALLELED EXPERTISE

Vionic is supported by a first-class team of experts unlike any other footwear brand. The Vionic Innovation Lab is a collaborative of world-renowned authorities with a common vision: to enhance foot health and advance affordable, innovative technologies that help feet and legs function at their very best.

Vionic with Orthaheel® Technology is proud to carry the only products having earned both the APMA Seal of Acceptance and a recommendation from world-renowned integrative medicine expert, Andrew Weil, M.D.

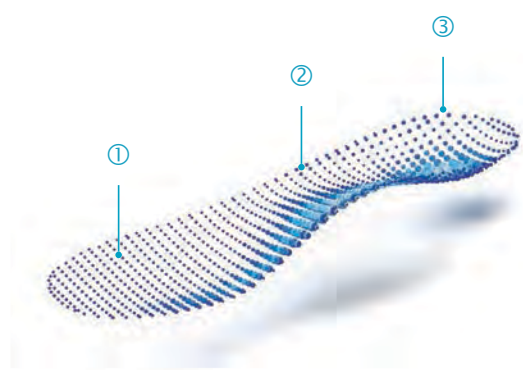


Andrew Weil, M.D., donates all of his after-tax profits from royalties from sales of Vionic with Orthaheel® Technology products directly to the Weil Foundation, a not-for-profit organization dedicated to supporting integrative medicine through training, education and research. For more information, visit www.weilfoundation.org.



IT'S WHAT'S
inside that counts.

Orthaheel® Technology is the foundation of each and every Vionic shoe, sandal and slipper. Each design begins with an innovative contour seamlessly built into the footbed. This trusted orthotic engineering is designed to provide you with proper alignment, which can help reduce common aches and pains from the ground up.



Our unique orthotic technology is built right into Vionic men's & women's flat shoes.

- ① **Unmatched Relief:** Firm yet flexible midsole.
- ② **Addictive Support:** Innovative biomechanical footbed.
- ③ **Essential Stability:** Deep heel cup.



Learn more about how our heels & wedges provide



fine *Wine*

Wearable burgundy and plum hues add dimension to crisp autumn days and cold winter nights.



Ease Sydney

MSRP \$129.95 | STYLE: 456SYDNEY



PATENT PENDING

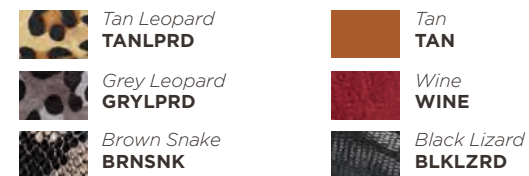
BEST SELLER



With a chic, deconstructed vamp and signature metal saddle trim, the popular Ease Sydney loafer is a classic driver with modern appeal.

Upper: Leather, Printed Leather or Haircalf
Footbed: Removable Micro-fiber Covered EVA
Outsole: Durable Rubber

Women's Whole & Half Sizes | One Width
Medium 5, 6-10, 11



Chill Athens

MSRP \$139.95 | STYLE: 356ATHENS



PATENT PENDING



The Chill Athens moccasin is constructed in luxurious suede and features a jeweled vamp, perfect for getting comfortable in festive style.

Upper: Kid Suede
Footbed: Removable Micro-fiber Covered EVA
Outsole: Durable Rubber



Charm Alda

MSRP \$129.95 | STYLE: 456ALDA



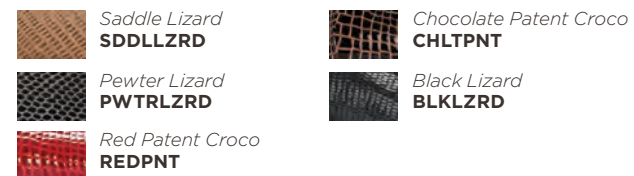
PATENT PENDING



Leather uppers in printed snake or lizard gives the Charm Alda a luxurious look. The vamp is finished with a two-toned metal chain, anchored with our signature rivet.

Upper: Printed Leather
Footbed: Removable Micro-fiber Covered EVA
Outsole: Durable Rubber

Women's Whole & Half Sizes | Two Widths
Medium 5, 6-10, 11 | Wide 6-10, 11



Cloud Goleta

MSRP \$119.95 | STYLE: 354GOLETA



PATENT PENDING



The Cloud Goleta Mary Jane is casual with artisan appeal. Updated to provide the most secure fit, it features a functional buckle for adjustability across the vamp with studded embellished strap.

Upper: Leather
Footbed: Removable Micro-fiber Covered EVA
Outsole: Durable Rubber

Women's Whole & Half Sizes | One Width
Medium 5, 6-10, 11



loafing around in
Luxury

high *Shine*

Sparkling gemstones & bright metallics elevate classic silhouettes from ordinary to opulent.



Spark Willow
MSRP \$119.95 | STYLE: 359WILLOW

BEST SELLER

Micro-stud embellishments adorn this ballet flat, creating a scape of shimmer, shine and texture. Slight elasticity in the topline is an added comfort feature. Suede heel cap.

Upper: Leather
Footbed: Removable Micro-fiber Covered EVA
Outsole: Durable Rubber

Women's Whole & Half Sizes | One Width
Medium 5, 6-10, 11



PATENT PENDING



Spark Minna
MSRP \$119.95 | STYLE: 359MINNA

This ballet slipper is anything but flat. Spark Minna features a dainty bow trim and a dressy patent toe cap.

Upper: Leather or Printed Suede
Footbed: Removable Micro-fiber Covered EVA
Outsole: Durable Rubber

Women's Whole & Half Sizes | Two Widths
Medium 5, 6-10, 11 | Wide 6-10, 11



PATENT PENDING



demi *Wedge*

Treat Powell
MSRP \$129.95 | STYLE: 386POWELL

BEST SELLER

The Treat Powell demi wedge offers a textile upper for the lady who needs a little extra deconstructed coverage and softness for her feet. A conservative vamp and hint of stretch offer a sure fit and ultimate comfort throughout the day.

Upper: Textile
Footbed: Removable Micro-fiber Covered EVA
Outsole: Durable Rubber

Women's Whole & Half Sizes | Two Widths
Medium 5, 6-10, 11 | Wide 6-10, 11



PATENT PENDING

confidence Calls

Comfort-crafted heels & wedges kick
supportive style up a notch.



Elevated Antonia
MSRP \$129.95 | STYLE: 389ANTONIA
PATENT PENDING



**BEST
SELLER**

Truly striking for the fashion-minded consumer, Elevated Antonia flaunts a feminine low wedge and a flattering v-shaped throat.

Upper: Leather, Kid Suede or Haircalf
Footbed: Removable Micro-fiber Covered EVA
Outsole: Durable Rubber

Women's Whole & Half Sizes | Two Widths
Medium 5, 6-10, 11 | Wide 6-10, 11



Natural Snake
NATSNK



Tan Leopard
TANLPRD



Tan
TAN



Wine
WINE



Black
BLK

Career Mabrey
MSRP \$129.95 | STYLE: 389MABREY



PATENT PENDING



Meet our first-ever city-chic career pump! Stacked to the hilt with confidence, Career Mabrey is finished with premium leather or haircalf material and a modern, molded EVA heel.

Upper: Leather, Printed Leather or Haircalf

Footbed: Removable Micro-fiber Covered EVA

Outsole: Durable Rubber

Women's Whole & Half Sizes | One Width
Medium 5, 6-10, 11



Slate Snake
SLTSNK



Black
BLK



Wine Leopard
WNLPRD

Career Sumner
MSRP \$129.95 | STYLE: 389SUMNER



PATENT PENDING



The Career Sumner heel works double-time as both a work appropriate pump and a wearable weekend accessory. The versatile style offers moderate coverage across the vamp and a touch of gore on the lateral side.

Upper: Leather

Footbed: Removable Micro-fiber Covered EVA

Outsole: Durable Rubber

Women's Whole & Half Sizes | One Width
Medium 5, 6-10, 11



Bronze
BRNZ



Black
BLK



Wine
WINE



casual *cool*

Ankle-touching designs sport a versatile look for city chic style.



PATENT PENDING

Charm Adrie

MSRP \$159.95 | STYLE: 422ADRIE
PATENT PENDING



Charm Adrie is a casual ankle boot offered in soft, full-grain leathers with buckled instep strap and heavy thread design details.

Upper: Leather, Kid Suede or Haircalf
Footbed: Removable Micro-fiber Covered EVA
Outsole: Durable Rubber

Women's Whole & Half Sizes | Two Widths
Medium 5, 6-10, 11 | Wide 6-10, 11



Rest Joan

MSRP \$99.95 | STYLE: 474JOAN



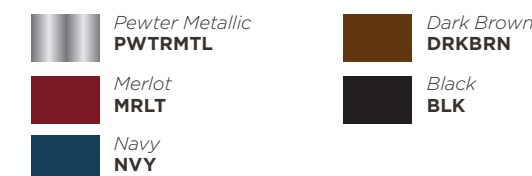
PATENT PENDING



A beaded rosette takes the limelight on this luxurious slip-on. Hook-and-loop closure provides a point of adjustability.

Upper: Leather or Kid Suede
Footbed: Removable Micro-fiber Covered EVA
Outsole: Durable Rubber

Women's Whole Sizes | One Width
Medium 5-11



Rest Calgary

MSRP \$109.95 | STYLE: 371CALGARY



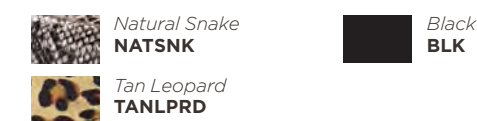
PATENT PENDING



Premium materials dress up this classic mule design. An adjustable buckle makes the vamp customizable for the right fit.

Upper: Leather, Printed Leather or Haircalf
Footbed: Removable Micro-fiber Covered EVA
Outsole: Durable Rubber

Women's Whole Sizes | One Width
Medium 5-11





buckle Down

Slip into the season effortlessly with easy adjustability & stately hardware.



PATENT PENDING

Elation Bayside
MSRP \$139.95 | STYLE: 381BAYSIDE



Constructed on our newly popular clog unit, Elation Bayside is a classic style with on-trend rivets and a Vionic-branded buckle.

*Upper: Printed Leather
Footbed: Removable Micro-fiber Covered EVA
Outsole: Durable Rubber*

**Women's Whole & Half Sizes | One Width
Medium 5, 6-10, 11**



Toffee
TOFF



Black
BLK

go ahead, get
comfortable

Our newest slippers are perfectly plush, ready to slip on.



PATENT PENDING

Cozy Juniper
MSRP \$89.95 | STYLE: 366JUNIPER

**BEST
SELLER**

Cozy Juniper is the perfectly luxurious option for the consumer who desires the security of a back to her house slipper. Cozy faux fur lines the inside for ahh-mazing comfort.

*Upper: Microfiber and Textile
Footbed: Faux Shearling Covered EVA
Outsole: Durable Rubber*

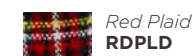
**Women's Whole & Half Sizes | One Width
Medium 5, 6-10, 11**



Tan Leopard
TANLPRD



Chestnut
CHSTN



Red Plaid
RDPLD



Black
BLK





PATENT PENDING

Indulge Relax

MSRP \$59.95 | STYLE: 26RELAX



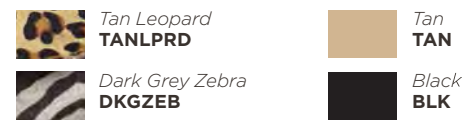
Keep your toes free and your soles supported with the classic, adjustable Indulge Relax slipper. Designed in padded terry and faux fur for serious cuddliness.

Upper: Textile

Footbed: Textile Covered EVA

Outsole: Fabric Covered TPR

Women's Whole Sizes | One Width
Medium 5-11



PATENT PENDING

Indulge Gemma

MSRP \$59.95 | STYLE: 26GEMMA



BEST SELLER

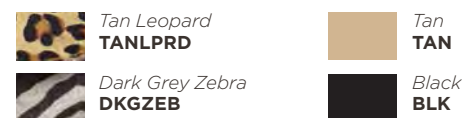
This all-time favorite is a plush mule-style spa slipper. Features an adjustable hook-and-loop closure across the vamp for adjustability.

Upper: Textile

Footbed: Textile Covered EVA

Outsole: Fabric Covered TPR

Women's Whole Sizes | One Width
Medium 5-11



PATENT PENDING

Indulge Gemma Luxe

MSRP \$69.95 | STYLE: 671GEMMALUX



A classic mule slipper, this is a jewel-embellished favorite. Features luxurious spa-quality plushness and a hook-and-loop closure for adjustability.

Upper: Textile

Footbed: Textile Covered EVA

Outsole: Fabric Covered TPR

Women's Whole Sizes | One Width
Medium 5-11



go faux

Fuzzy softness that never hurt a single sole.



PATENT PENDING

Indulge Vanah

MSRP \$89.95 | STYLE: 622VANAH

The modern classic deconstructed shearling-style boot finally gets some arch support! The microfiber upper with plush, faux fur lining and a secure hook-and-loop closure is sure to hit holiday wish lists.

Upper: Textile

Footbed: Textile Covered EVA

Outsole: TPR Outsole

Women's Whole Sizes | One Width
Medium 5-11



ATHLETIC + Leisure



Our take on active shoes
THAT LOOK + FEEL GREAT
 for walking, talking and everything in between.

Action Heritage
 MSRP \$89.95 | STYLE: 331HERITAGE



PATENT PENDING



This style provides the best of convenience and support, all in one active shoe. Breathable mesh upper with a hint of stretch lends itself to lightweight comfort.

Upper: Leather & Mesh
Footbed: Removable Micro-fiber Covered EVA
Outsole: Durable Rubber

Women's Whole & Half Sizes | One Width
Medium 5, 6-10, 11

-  White
WHT
-  Navy
NVY
-  Sand
SND
-  Black
BLK

Action Emerald
 MSRP \$119.95 | STYLE: 335EMERALD



PATENT PENDING

The Action Emerald active shoe serves as a smart update to the iconic Rhythm walker. Designed with a cool, comfortable mesh upper, an action lacing system and a modern, sporty rubber outsole, it's making strides for our Athleisure shoe category.

Upper: Mesh & Man-made
Footbed: Removable Micro-fiber Covered EVA
Outsole: Durable Rubber

Women's Whole & Half Sizes | One Width
Medium 5, 6-10, 11

-  White
WHT
-  Navy
NVY
-  Berry
BRRY
-  Black
BLK
-  Dark Grey
DRKGRY

Action Tourney
 MSRP \$129.95 | STYLE: 335TOURNEY



PATENT PENDING

Hot for fashion, cool for an active lifestyle, the Action Tourney sneaker features an innovation construction from top to bottom. The breathable patterned textile upper is complemented by an action-lacing system and durable, flex-grooved outsole.

Upper: Printed Mesh
Footbed: Removable Micro-fiber Covered EVA
Outsole: Durable Rubber

Women's Whole & Half Sizes | One Width
Medium 5, 6-10, 11

-  Tan Leopard
TANLPRD
-  Blue Teal
BLU
-  Pink Purple
PNK
-  Grey Leopard
GRYLPRD



**BEST
SELLER**

PATENT PENDING

Motion Venture

MSRP \$99.95 | STYLE: 335VENTURE

Lightweight, durable mesh and man-made overlays give the Motion Venture active shoe a sporty look while promoting breathability, comfort and confidence with each step.

Upper: Mesh & Man-made

Footbed: Removable Micro-fiber Covered EVA

Outsole: Durable Rubber

Women's Whole & Half Sizes | Two Widths
Medium 5, 6-10, 11, 12 | Wide 6-10, 11



PATENT PENDING

Vionic Walker

MSRP \$99.95 | STYLE: 23WALK

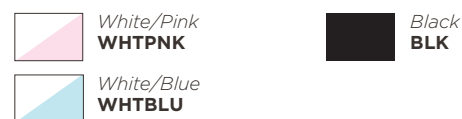
The classic all-purpose Vionic Walker is an iconic shoe for the comfort seeker from any walk of life.

Upper: Leather & Mesh

Footbed: Removable Micro-fiber Covered EVA

Outsole: Durable Rubber

Women's Whole & Half Sizes
5, 6-10, 11, 12



tried & true



We're continuing our most trusted styles to offer year-round style & relief.



Tide II

MSRP \$64.95 | STYLE: 44TIDEII

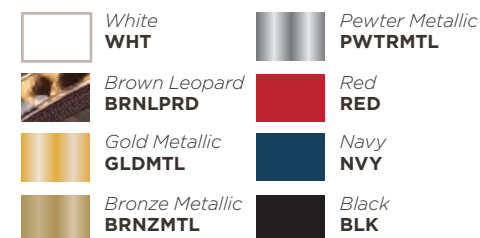
The iconic flip flop style returns in leather with classic neutrals and leopard print.

Upper: Leather with Textile

Footbed: EVA

Outsole: Durable Rubber

Women's Whole Sizes | One Width
Medium 5-12



Tide Rhinestones

MSRP \$74.95 | STYLE: 340TIDERS

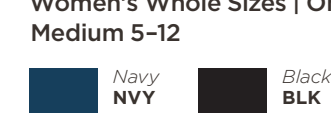
Islander Rhinestones is designed with the rebel in mind. A total rock star, this timeless flip flop with bling takes the spotlight.

Upper: Suede Leather & Man-made Gems

Footbed: EVA

Outsole: Durable Rubber

Women's Whole Sizes | One Width
Medium 5-12



Tide Sequins

MSRP \$69.95 | STYLE: 44TIDESQ

Islander Sequins shines in an array of demure shades, offering iconic technology with lustrous looks.

Upper: Man-made

Footbed: EVA

Outsole: Durable Rubber

Women's Whole Sizes | One Width
Medium 5-12



simply
irresistable



Bella II
MSRP \$74.95 | STYLE: 44BELLAII

**BEST
SELLER**



The Bella II toe-post sandal is a true beauty with padded patent uppers and a dainty bow detail.

Upper: Man-made
Footbed: Micro-fiber Covered EVA
Outsole: Durable Rubber

Women's Whole Sizes | Two Widths
Medium 5-11 | Wide 6-11



PATENT PENDING

Eve
MSRP \$74.95 | STYLE: 44EVE



A gem of a flip flop, the Eve toe-post sandal is multi-faceted with both boho and gilded appeal.

Upper: Man-made
Footbed: EVA
Outsole: Durable Rubber

Women's Whole Sizes | Two Widths
Medium 5-11 | Wide 6-11



PATENT PENDING

Floriana
MSRP \$79.95 | STYLE: 340FLORIANA

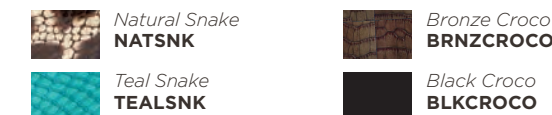


PATENT PENDING

The Floriana toe-post sandal is intricately designed with earthy stones in geometric shapes, dainty riveting and gorgeously textured material.

Upper: Man-made
Footbed: Micro-fiber Covered EVA
Outsole: Durable Rubber

Women's Whole Sizes | Two Widths
Medium 5-11 | Wide 6-11



Adorable and adjustable, this sandal features a metal trim detail hook-and-loop closure on the straps..

Upper: Man-made or Natural Cork
Footbed: Micro-fiber Covered EVA
Outsole: Durable Rubber

Women's Whole Sizes | One Width
Medium 5-11



Camila
MSRP \$79.95 | STYLE: 341CAMILA



PATENT PENDING

Karina
MSRP \$79.95 | STYLE: 340KARINA



PATENT PENDING

The Karina toe-post sandal features adjustable leather straps and a bold metal ring detailing the vamp.

Upper: Man-made
Footbed: Micro-fiber Covered EVA
Outsole: Durable Rubber

Women's Whole Sizes | One Width
Medium 5-11



Amber
MSRP \$79.95 | STYLE: 44AMBER

**BEST
SELLER**

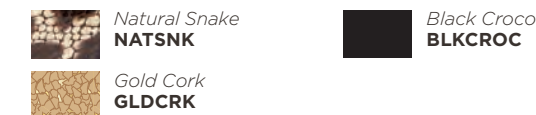


PATENT PENDING

The best-selling Amber casual sandal offers hook-and-loop closures on the vamp and backstrap for maximum adjustability.

Upper: Man-made or Natural Cork
Footbed: Micro-fiber Covered EVA
Outsole: Durable Rubber

Women's Whole Sizes
4-12





TRIPLE DENSITY TRIPLE-DENSITY EVA with

Mojave

MSRP \$109.95 | STYLE: 24MOJAVE

A VIBRAM® outsole offers superior traction while padded leather uppers offer comfort and durability. An adjustable hook-and-loop closure across the vamp provides secure fit.

Upper: Leather with Textile
Footbed: Triple Density EVA
Outsole: Durable Rubber

Women's Whole Sizes | One Width
Medium 5-11

 *Berry/Grey*
BRRY

 *Chocolate/Teal*
CHLTEL



PATENT PENDING



Muir

MSRP \$119.95 | STYLE: 24MUIR

The ultimate traveler's companion, the Muir backstrap sandal features adjustable hook-and-loop closures across the vamp and along the backstrap, and a VIBRAM® outsole for superior traction.

Upper: Leather with Textile
Footbed: Triple Density EVA
Outsole: Durable Rubber

Women's Whole Sizes | One Width
Medium 5-11

 *Berry/Grey*
BRRY

 *Chocolate/Teal*
CHLTEL



PATENT PENDING



Wave

MSRP \$59.95 | STYLE: 44WAVE

BEST SELLER



The Wave is a unique flip flop sandal with soft, padded jersey-lined uppers and nylon webbing toe-post for maximum comfort.

Upper: Leather with Textile
Footbed: EVA
Outsole: Durable Rubber

Women's Whole Sizes | One Width
Medium 5-11

 *Khaki*
KHA

 *Black*
BLK

 *Chocolate*
CHLT



designed for

Style

Durable uppers with cozy linings are supportive must-haves for the man-cave and beyond.



engineered for Support

Comfortable casuals are handsomely designed for weeks in town and weekends out.



PATENT PENDING

Parker

MSRP \$139.95 | STYLE: 45PARKER

Parker drives home a true classic. In full-grain leather or suede with a rolled moc seam, a folded collar and stitched sole construction, the details are dialed in for a truly handsome driver.

*Upper: Full Grain Leather or Suede
Footbed: Terry Covered EVA
Outsole: TPR with Rubber Inserts*

Men's Whole & Half Sizes | One width
Medium 7, 8-12, 13

 *Chocolate*
CHLT  *Black*
BLK



PATENT PENDING




Dewey

MSRP \$109.95 | STYLE: 671DEWEY

The Dewey indoor/outdoor slipper is a faux shearling-lined moccasin constructed with a suede upper and traditional laced detail. A guy's go-to for chilly mornings and for evenings just to chill.

*Upper: Leather
Footbed: Terry Covered EVA
Outsole: TPR with Rubber Inserts*

Men's Whole Sizes | One width
Medium 7-13

 *Chestnut*
CHSTN  *Black*
BLK
 *Brown*
BRN



PATENT PENDING

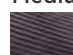
Maxwell

MSRP \$89.95 | STYLE: 656MAXWELL

This slipper is versatile enough for wear indoors and out. Crafted with twin gore, a rubber outsole and a wool-blend lining for warmth and durability, Maxwell has casual support covered.

*Upper: Herringbone Fabric
Footbed: Terry Covered EVA
Outsole: TPR with Rubber Inserts*

Men's Whole Sizes | One width
Medium 7-13

 *Dark Grey*
DRKGRY  *Brown*
BRN



PATENT PENDING

**BEST
SELLER**



Barrow

MSRP \$99.95 | STYLE: 671BARROW

With superior support in a traditional slipper style, Barrow is a faux shearling-lined favorite, perfect for man-caves everywhere.

*Upper: Leather
Footbed: Terry Covered EVA
Outsole: TPR with Rubber Inserts*

Men's Whole Sizes | One width
Medium 7-13

 *Chestnut*
CHSTN  *Dark Grey*
DRKGRY



dialed-in Detail

Comfort features and innovative designs outfit our Active collection for peak performance.



BEST SELLER



Harbor

MSRP \$74.95 | STYLE: 44HARBOR

A solid pick for jam-packed weekends on the go, this sandal offers versatility with an adjustable man-made upper, padded jersey lining and a soft yet durable webbed toe post.

Upper: Man-made Nubuck | Footbed: EVA | Outsole: Durable Rubber

Men's 7-14 in Whole Sizes



PATENT PENDING

Adam

MSRP \$79.95 | STYLE: 44ADAM

Kick off the season with these two-banded criss-cross slides. Man-made uppers with zig-zag center stitch detail and padded jersey lining feature a supportive contoured EVA miadsole and full-rubber outsole with flex grooves for traction.

Upper: Man-made Nubuck | Footbed: EVA | Outsole: Durable Rubber

Men's 7-14 in Whole Sizes



PATENT PENDING

Mick

MSRP \$89.95 | STYLE: 44MICK

Designed for a little adventure and a lot of support, the Mick sandal offers maximum customization and ultimate comfort through three points of adjustability, fully-padded jersey lining and substantial uppers.

Upper: Man-made Nubuck | Footbed: EVA | Outsole: Durable Rubber

Men's 7-14 in Whole Sizes



PATENT PENDING

Walker

MSRP \$99.95 | STYLE: 23MWALK

Our all-purpose Walker features leather uppers combined with a lightweight EVA midsole for flexible comfort. A durable rubber outsole assists with stability and traction.

Upper: Leather
Footbed: Removable Dual-Density EVA
Outsole: TPR with Rubber Inserts

Men's Whole & Half Sizes | Two Widths
Medium 7, 8-12, 13 | Wide 8-12, 13



Contest

MSRP \$99.95 | STYLE: 535CONTEST

Designed to perform, Contest is constructed in lightweight mesh and durable man-made overlays to promote breathability and superior comfort with every wear.

Upper: Man-made with Mesh
Footbed: Removable Dual-Density EVA
Outsole: TPR with Rubber Inserts

Men's Whole & Half Sizes | Two Widths
Medium 7, 8-12, 13, 14 | Wide 8-12, 13





Bryce

MSRP \$109.95 | STYLE: 24BRYCE



PATENT PENDING

An athlete's sandal built to perform, Bryce features flexible leather uppers, a padded jersey lining and soft toe post for an ultra-comfortable fit.

Upper: Nubuck Leather
Footbed: Triple-Density EVA
Outsole: Durable Rubber

Men's Whole Sizes | One Width
Medium 7-13

Khaki KHA Black/Grey BLKGRY

Boyes

MSRP \$119.95 | STYLE: 44BOYES



PATENT PENDING

This iconic style for active guys everywhere offers three points of adjustability through hook and loop closure across the vamp and around the backstrap.

Upper: Nubuck Leather
Footbed: Triple-Density EVA
Outsole: Durable VIBRAM® Rubber

Men's Whole Sizes | One Width
Medium 7-13

Taupe TPE Black BLK
Chocolate CHLT

Tide

MSRP \$64.95 | STYLE: 44RYDER



PATENT PENDING

Our classic Tide sandal is now available in men's sizes! The tried and tested style and support are sure to make the men's Tide a summer staple.

Upper: Full-Grain Leather
Footbed: EVA
Outsole: Durable Rubber

Men's Whole Sizes | One Width
Medium 7-14

Brown BRN Black/Grey BLKGRY

Ryder

MSRP \$64.95 | STYLE: 44RYDER



PATENT PENDING

A classic flip-flop sandal with adjustability along the vamp, Ryder features a padded jersey-lined upper and a soft nylon webbing toe post for even greater comfort.

Upper: Man-made with Nubuck
Footbed: EVA
Outsole: Durable Rubber

Men's Whole Sizes | One Width
Medium 7-13

Chocolate CHLT Black/Grey BLKGRY

JOEL

MSRP \$99.95 | STYLE: 44JOEL



PATENT PENDING

Slip into luxury and unassuming good looks with full-grain, color-blocked leather uppers, jersey padded lining and a soft, durable webbed toe post.

Upper: Full-Grain Leather | Footbed: Embossed Leather Covered EVA
Outsole: Durable Rubber

Men's 7-14 in Whole Sizes

Chocolate/Tan CHLTTAN Black/Grey BLKGRY

Wave

MSRP \$59.95 | STYLE: 44WAVE



PATENT PENDING

The Wave flip flop is an all-time bestseller with soft, padded jersey-lined uppers and a nylon-webbed toe post for maximum comfort. Available in a wider width, it can accommodate and support the most demanding feet.

Upper: Nylon Webbing & Padded Jersey
Footbed: EVA
Outsole: Durable Rubber
US Patent No. D592840

Unisex Whole Sizes | One Width
Medium 5-14

Khaki KHA Black BLK
Chocolate CHLT

JON

MSRP \$109.95 | STYLE: 54IJON



PATENT PENDING

Crafted with handsome leathers, the Jon sandal offers slip-on sensibility with timeless style for any casual outing.

Upper: Full-Grain Leather | Footbed: Embossed Leather Covered EVA
Outsole: Durable Rubber

Men's 7-14 in Whole Sizes

Chocolate/Tan CHLTTAN Black/Grey BLKGRY



Custom Orthotics*

Low cost, customizable orthotic solutions.



GREEN = LOW DENSITY

STYLE: 71R & 71F SIZES: KSM-XXL

Ideal for elderly, diabetic and arthritic patients who require special consideration. Patients adapt easily to the mild functional control while the correct biomechanical position is maintained.

BLUE = MEDIUM DENSITY

STYLE: 71R & 71F SIZES: KSM-XXL

Designed for the 'average' patient with general orthotic needs, blue density orthotics provide excellent biomechanical control.

RED = HIGH DENSITY

STYLE: 71R & 71F SIZES: KSM-XXL

Designed for high performance, this range provides both durability and solid biomechanical control. Red, high performance orthotics are ideal for athletes, high activity users and overweight patients.

SHOCK ABSORBER

STYLE: 71SA SIZES: XS-XL

Using high-energy shock-absorption PU and shock absorbing technology, the Vasyli Orthotic Shock Absorber gives you maximum shock-absorption during walking, running and sports. It also features a number of unique biomechanical benefits. As a result, it gives your patient excellent comfort, mild biomechanical control and lasting cushioning the foot as the heel is raised.

EASYFIT

STYLE: 71EF SIZES: KS-XL

This model features a lateral cut-away providing an easy fit into hard-to-fit footwear, including men's loafers & ladies (low-heeled) dress shoes and cleats. Ideal for both narrow and wide fitting footwear.

EXTENDED SLIMFIT

STYLE: 71ESF SIZES: XS-L

The VASYLI Custom Slimfit is specifically designed to fit ladies shoes, such as fashion shoes and high-heels. The flexible base allows easy contouring of the shank of the shoe. The rearfoot angle is reduced to 2 degrees due to the "high heel factor" (tibio talar axis) whose action inverts the foot as the heel is raised.

*Professional distribution only.

EVERYDAY OTC MEN'S & WOMEN'S
DESIGNED FOR EVERYDAY USE



PODIATRIST DESIGNED, MEDICAL ONLY COST EFFECTIVE, ORTHOTIC SOLUTION.

FEATURES:

- DEEP HEEL CUP.
- COMFORTABLE METATARSAL RAISE.
- FIRST RAY PLANTAR FLEXOR TECHNOLOGY.
- READY TO WEAR.
- OPTIONAL POSTING AND WEDGING PIECES.

STYLE: MEN'S 71MOTC SIZES: XS-XXL
WOMEN'S 71WOTC SIZES: XS-L



*Professional distribution only.

LCD DIABETIC ORTHOTIC

ENDORSED BY
David Armstrong, DPM



DUAL DENSITY ORTHOTIC FOR DIABETIC OR SENSITIVE FOOT PROBLEMS

FEATURES:

- DESIGNED TO PROTECT SENSITIVE FEET FROM EXCESSIVE PRESSURE.
- PROVIDES TOTAL CONTACT AND COMFORT.
- MADE FROM MEDICAL GRADE MATERIALS THAT RETAIN SHAPE AND FUNCTION.
- SOFT PLAZTAZOTE TOP LAYER GENTLY CONFORMS TO THE FOOT.
- EVA ORTHOTIC BASE CAN BE HEAT MOLDED TO PERSONALIZE SUPPORT AND COMFORT.

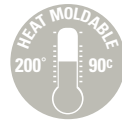
STYLE: 71LCD SIZES: XS-XXL



*Professional distribution only.



Signature Series Orthotics*



With over 30 years of experience in the treatment of Lower Limb Biomechanical Dysfunction, Vasyli Medical offers a product range, depth of knowledge and clinical experience second to none.

VASYLI + DANANBERG



BEST SELLER

STYLE: 71HDF SIZES: XS-XXL

The flexibility of the design of the Vasyli + Dananberg allows for a wide combination of applications to address your patients triplanar motion problems. The Vasyli + Dananberg is heat moldable to personalize the comfort control.

The Tri-Compound Construction (TCC) is a design patented feature of the Vasyli + Dananberg orthotic. The bonding of these materials is unique in a pre-configured heat moldable orthotic. This blend of PU, EVA and shock absorbing material ensures comfort, function and control.

VASYLI | Signature Series

VASYLI + PRIOR



STYLE: 71VP SIZES: XS-XXL

Designed to fit the confines of low profile, stud/cleated sports footwear. This style of footwear is unique in it's challenges to accommodate an orthotic device. The lack of depth in the heel, the tight "glove like" fit, softness of the leather plus the narrow profile of the stud / cleat pattern and flat last all contribute to a difficult environment in which to control the foot.

Perfect for helping with tight posterior muscles and associated conditions that are often exacerbated in flat lasted sports footwear.

VASYLI | Signature Series



VASYLI HEAT GUN

STYLE: 79HGUSACL



INCLUDES 1ST RAY FUNCTION



LOW PROFILE SPORT ORTHOTIC

VASYLI + ARMSTRONG



STYLE: 71VAII SIZES: XS-XXL

The Vasyli + Armstrong II is designed to fit medium, wide and XW width fittings. The fore foot thickness has also been reduced. The Vasyli + Armstrong II orthotic addresses the key problem areas for the sensitive foot - shear / friction and pressure, by utilizing patented GlideSoft® technology. This unique combination of construction and materials has been scientifically shown to reduce shear pressures. Also effective in reducing shear forces in athletic footwear.

VASYLI | Signature Series

VASYLI + HOKE



STYLE: 71HOKE SIZES: XS-XL

The Vasyli + Hoke Supination Control orthotic is the result of a collaboration between Phillip Vasyli and Brian Hoke. It has been specifically designed to address the more complex and biomechanically challenging Pes Cavus foot types. The Vasyli - Hoke has integral design features to address each of these anatomical considerations.

VASYLI | Signature Series

VASYLI + McPOIL



STYLE: 71MCP SIZES: XS-XL

The Vasyli + McPoil Tissue Stress Relief Orthotic is the result of a collaboration between Phillip Vasyli and Tom McPoil. It's design incorporates intrinsic features based on the McPoil - Hunt Theory of Tissue Stress. Essentially, the orthotic incorporates a "dual-density" approach using a softer density overlay material to allow for the "normal" amount of pronation, while preventing over or excess pronation with a higher density orthotic shell.

VASYLI | Signature Series

VASYLI + McCONNELL

STYLE: 71JMESF SIZES: XS-L

The slimmer lines of the McConnell slimfit will suit a wide range of ladies footwear styles including summer sandals. The Vasyli + McConnell device has a reduced rearfoot posting so as not to over compensate for this action. The forefoot medial profile design aligns the transverse arch, reducing fore foot loading, a major contributing factor to metatarsalgia. The PU materials offers superior comfort and flexibility to ensure a correct fit every time.

VASYLI | Signature Series



IDEAL FOR SENSITIVE FEET



DESIGNED TO TREAT PES CAVUS FOOT TYPES



TISSUE STRESS RELIEF



IDEAL FOR WOMEN'S HIGH HEELS



RELIEF



**BEST
SELLER**

FULL-LENGTH

STYLE: 21RF UNISEX: XS-XL MSRP: \$34.95

3/4-LENGTH

STYLE: 21RR UNISEX: XS-XL MSRP: \$34.95

- EVA orthotic with Tri-Planar Motion Control technology.
- 4-degree rear-foot wedge to provide support and control.
- Contoured around the heel and arch areas to achieve complete foot contact.
- Cushioned shock dot in the heel for added shock absorption.
- Full-length can be trimmed in forefoot if necessary.



ACTIVE



STYLE: 21AF UNISEX: XS-XXL MSRP: \$39.95

- EVA orthotic with reinforced, hardened plastic (TPU) shell for added motion control and stability.
- 4-degree rear-foot wedge to provide support and control.
- Contoured around the heel and arch areas to achieve complete foot contact.
- Shock dot in the heel for added shock absorption.
- Can be trimmed in forefoot if necessary.



SHOCK ABSORBER

STYLE: 21OSA UNISEX: XS-XL MSRP: \$34.95

- PU full-length orthotic with cushioned footbed with heel to forefoot shock absorption.
- Ideal for customers who have never worn supportive orthotics.
- Softer rear-foot wedge provides low-level control of over-pronation.
- Can be trimmed in forefoot if necessary.



DRESS SLIMFIT

STYLE: 21ESF WOMAN'S: XS-L MSRP: \$34.95

- Made from soft PU with cushioned insert from heel to forefoot.
- Adhesive dot on underside prevents orthotic from sliding.
- 2-degree rear-foot wedge for support and control.
- Best suited for heeled shoes over 1D inches.



GEL HEEL DEVICE

STYLE: 21GHD UNISEX: S, M & L MSRP: \$24.95

- Made from soft silicone gel.
- Great shock-absorbing qualities.
- Softer rear-foot wedge provides support.



Point of sale resources

(Contact your representative for more information)



Medical Consumer Brochure



Medical Patient Education Brochure



22" x 28" Display Posters



Vionic Table Top Display Stand



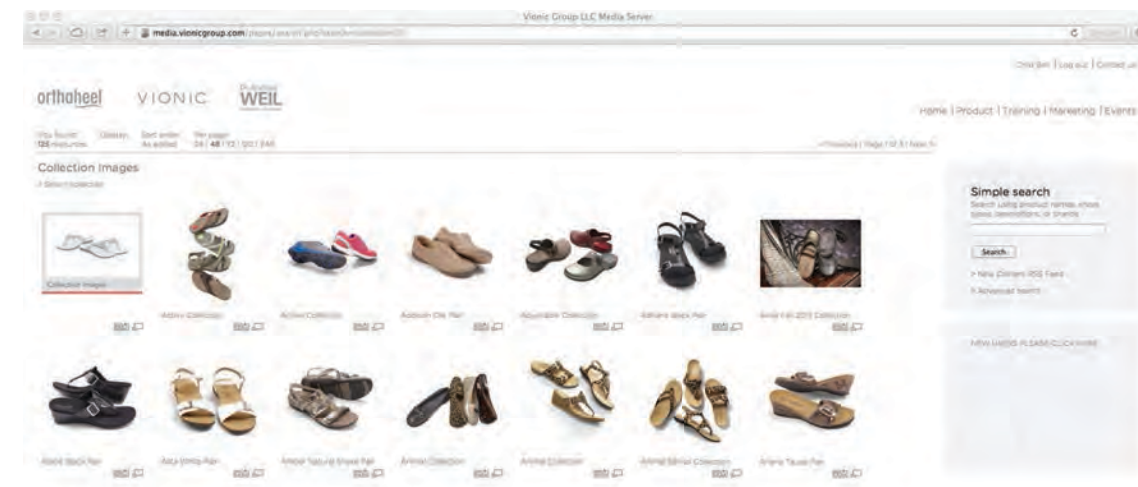
Vionic Slatwall



Vionic Floor Stand

DIGITAL RESOURCES

Visit our dynamic partner website: media.vionicgroup.com to download advertising templates, product imagery, web banners and much more.



VIONIC®

WITH
ORTHAHEEL®
TECHNOLOGY

MEDICAL DIVISION

Mark Sanders
General Manager
Phone: 415 755 2715
Email: msanders@vionicgroup.com

Brandon Noble (CO)
Director of Sales, The Americas
Phone: 865 748 8562
Fax: 415 526 6960
Email: bnoble@vionicgroup.com

MEDICAL SALES AGENTS

TX, NM, OK, AR, LA, MS
Alan Johnson
Phone: 940 453 4943
Email: giraffx@gmail.com

FL, AL
John Benitez
Phone: 305 742 8911
Email: jlbenitez28@bellsouth.net

MA, CT, RI, NH, VT, ME
Mike LaRosee (C. Ped.)
Phone: 617 792 7936
Email: mjl4147@aol.com

GA, NC, SC, TN
Sandy Smith
Phone: 815 608 6124
Email: ssmith@medrepsusa.com

E. PA, S.NJ, MD, DE, DC, VA
Josie Genovese
Phone: 215 550 9474
Email: josie.vionic@gmail.com

WA, OR, AK & ID
Mark Dorothy
Phone: 206 353 9100
Email: markedorothy@gmail.com

AZ, CA, UT & NV
Melody Giraldo
Phone: 623 363 0698
Email: mgiraldo@cox.net

NY & W. PA
Ronald J. Bell
Phone: 570 575 0683
Email: drbell9@yahoo.com

N.NJ & NYC
Shawn Ali
Phone: 786 258 5400
Email: soundwavesolutions@gmail.com

MI, OH, IN & KY
Tom Benoit
Phone: 248 613 1335
Email: tombenoit98@gmail.com

IL, WI, MN, IA, ND, SO, MO
Sharon Mack
Phone: 608 963 4623
Email: sharonvionic@gmail.com

ALL OTHER STATES/INSIDE SALES
Deena Rudden
Phone: 415 492 2190
drudden@vionicgroup.com



VIONIC GROUP CORPORATE OFFICE

4040 Civic Center Dr, Suite 430
San Rafael, CA, 94903 USA
Office: 1 888 882 7954



Vasyli Medical App Available:

